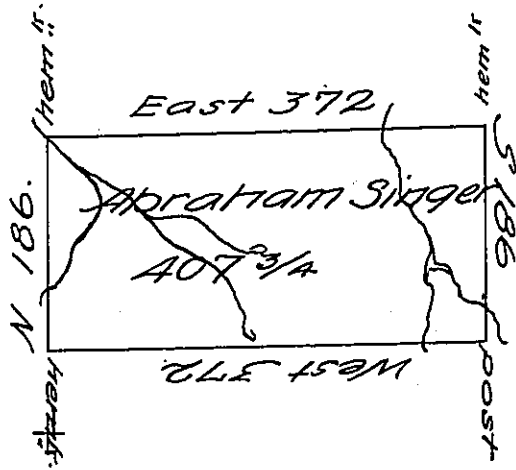


Rob<sup>d</sup> Shaw

Solomon Lyons



John Singer

John Greiter

Situate on the head waters of Towardie Creek in Northumb<sup>d</sup> or Luzerne County Surveyed the 4<sup>th</sup> day of Sept<sup>r</sup>: 1793 to Abraham Singer on Warrant dated the 30<sup>th</sup> July 1792 containing Four hund<sup>d</sup> Seven Acres three Quarters and Allowance of Six P Cent for Roads &c.

Jo. J. Wallis D.S.

Dan<sup>l</sup> Brodhead Esq. S. G.

IN TESTIMONY that the above is a copy of the original remaining on file in the Department of Internal Affairs of Pennsylvania, made conformably to an Act of Assembly approved the 16th day of February, 1833, I have hereunto set my Hand and caused the Seal of said Department to be affixed at Harrisburg, this eighteenth day of December 1906

*Lucas R. Pearson*  
 Secretary of Internal Affairs.